

dreaTM



Advanced Decompression Solutions for Multiple Spine Indications

Safer access. Preserved bone. Better results.

Carevature DrealTM is the first and only curved & powered, single use decompression system efficient enough to handle bony tissue and precise enough to work safely around the spinal anatomy.

The DrealTM is uniquely designed to allow easier, safer access, less trauma and less costs, resulting in better outcomes for both patients and the healthcare system.



carevature
Technologies

The DrealTM is intended to cut bone in neurosurgical and spinal applications. Prior to use, the surgeon should refer to the product Instructions for Use (IFU) for complete indications, warnings, precautions and contraindications.

Reshaping Spine Surgery

Performance

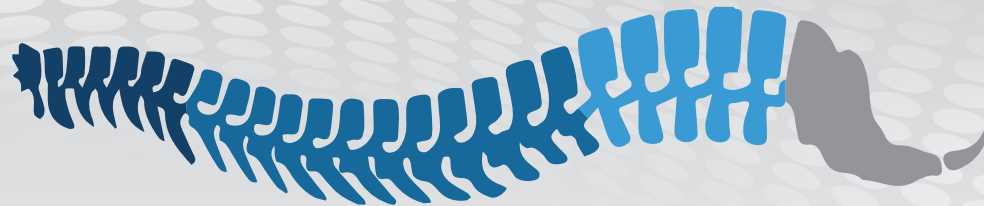
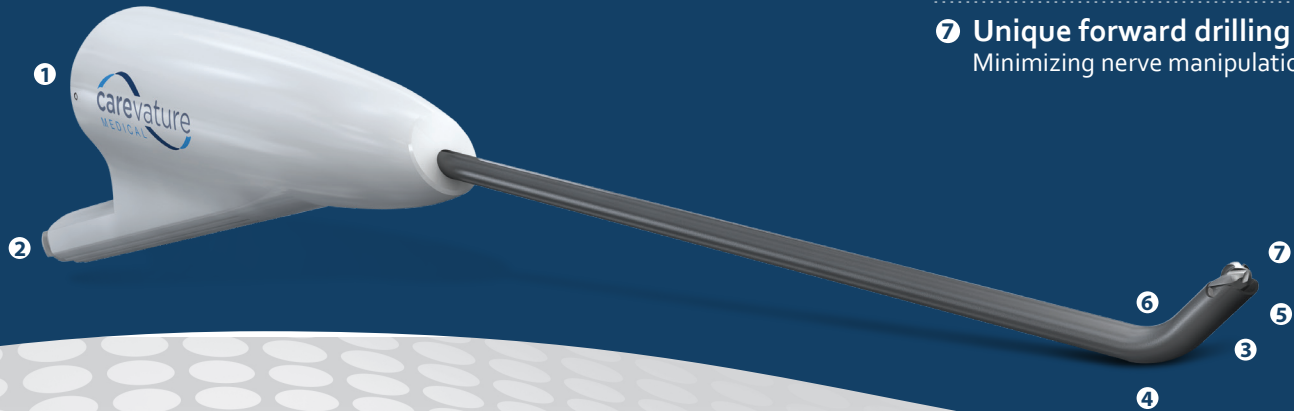
- 1 **Highspeed rotation**
Efficiently cuts bone
- 2 **Integrated irrigation**

Better Access

- 3 **2-3mm tip diameter**
Fits spinal anatomy
- 4 **9 mm radius of curvature**
Smallest in the market

Safety

- 5 **Shielded cutter**
With multiple orientations
- 6 **Enhanced visibility**
Ensured by the curve
- 7 **Unique forward drilling**
Minimizing nerve manipulation



Expanding Surgical Practice Options

Cervical spine

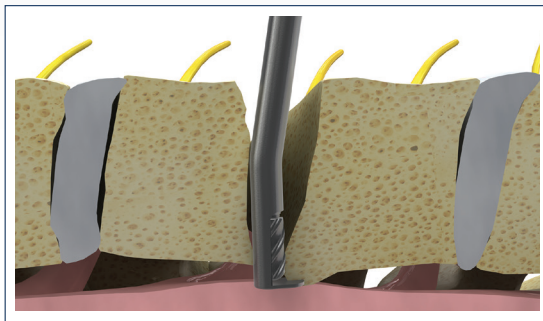
- Anterior Cervical Decompression and Fusion
- Posterior Cervical Fusion
- Posterior Cervical Decompression

Thoracic spine

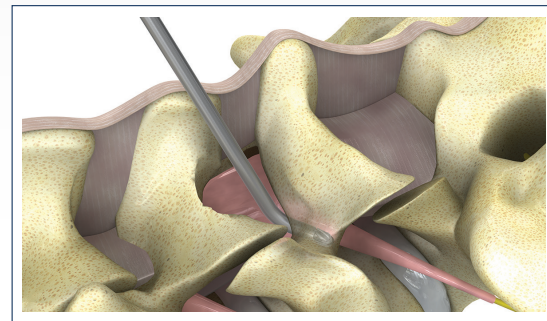
- Thoracic TLIF
- Thoracic Decompression

Lumbar spine

- Lumbar Decompression
- Lumbar MIS Decompression
- Lumbar TLIF/PLIF/ALIF



Cervical osteophyte and ligament removal in ACDF



Ipsilateral Foraminotomy