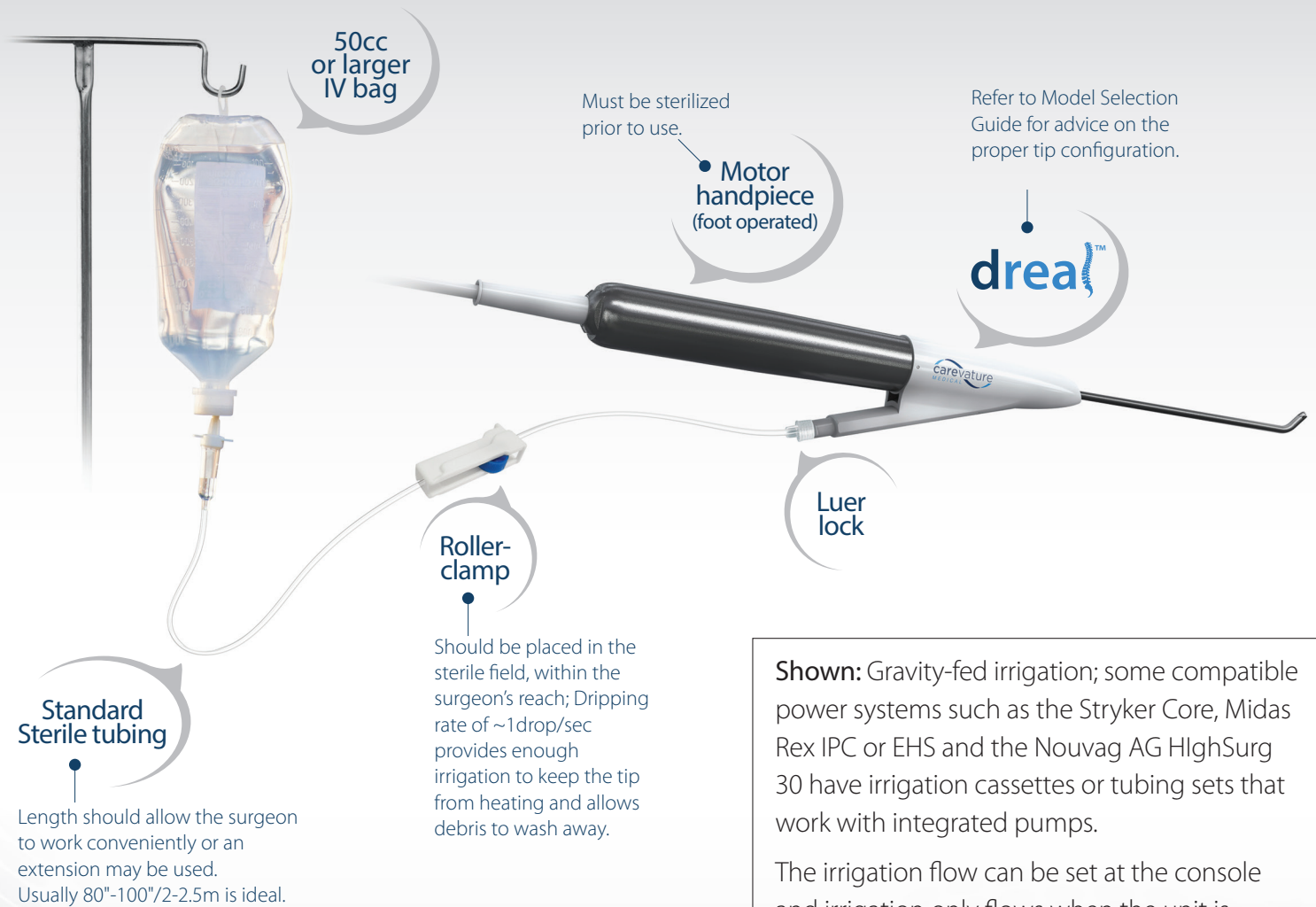


dreaTM OR Setup Guide

Refer to the Dreal[®] system Instructions for Use (IFU) for detailed instructions on motor and irrigation setup



Shown: Gravity-fed irrigation; some compatible power systems such as the Stryker Core, Midas Rex IPC or EHS and the Novag AG HighSurg 30 have irrigation cassettes or tubing sets that work with integrated pumps.

The irrigation flow can be set at the console and irrigation only flows when the unit is operated using the foot pedal.



The Dreal[®] is intended to cut bone in neurosurgical and spinal applications. Prior to use, the surgeon should refer to the product Instructions for Use (IFU) for complete indications, warnings, precautions and contraindications.

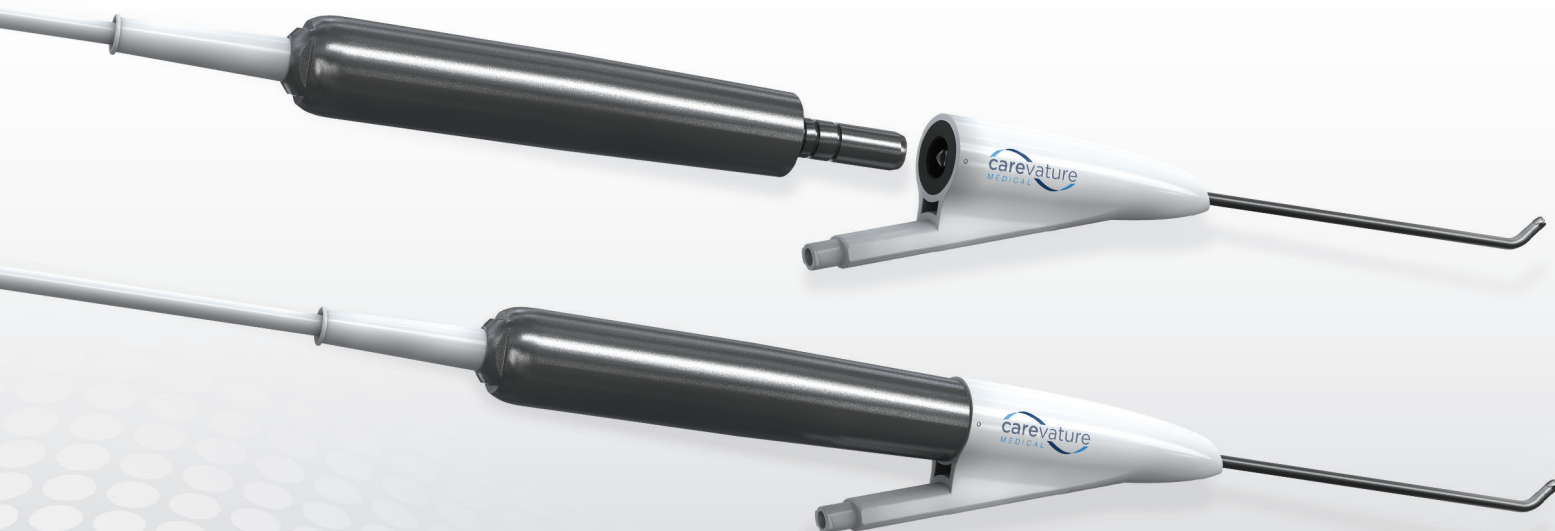
Driving the Dreal®

The Dreal® system can be powered by electric or pneumatic motors compatible with an ISO 3964 ('micro') connection or using appropriate adaptors. The motor system is not included and not part of the device.

Refer to the IFU for instructions on motor preparation and setup.

Motor Compatibility Chart

Vendor	Compatible [Cleared for Neuro and Spine surgery in the US]	Incompatible [Partial list]
Stryker	CORE/TPS with Micro-Drill or Rem-B handpieces	PI Drive, Sumex, Saber and Maestro series
Medtronic Midas Rex	Legend™ EHS Electric or MR7 Pneumatic; with Carevature Adaptor	MR8 series
DePuy Synthes Anspach™	Xmax, MicroMax Plus, eMax 2/eMax 2 Plus; with Carevature Adaptor	EG1 series
Nouvag AG	HighSurg 30	



Carevature Medical, Inc. | 190 Industrial Road, Suite 2, Wrentham, MA 02093 U.S.
www.carevature.com | Customer Services: 1-855-201-5770 | customer_service@carevature.com

Carevature® and Dreal® are Registered Trademarks of Carevature Medical Ltd.